

Soprano

# Between the shadows

Mark Van Overmeire

## 1. When all is said and done

*Andante moderato* **1** *mf* **2**

Go on. To find your own wa -

9 **1** **1** **A**

- y. Be - lieve. Don't. Go on. Don't stop.

19 **2** **B**

Don't stop. It is not real. Do - n't Go on. Do -

29 **1**

- n't To find your own wa - y. Be - lieve. Don't

38 **C**

Just lea - ve. No need to no need to stay. No need to no

46 **D** *mp*

need to be - tray. So, don't stop now. Just don't stop now.

56 *rit.* *ppp* **2**

So don't stop now. Ti - me moves on. \_\_\_\_\_

67 **E** *a tempo* *mf*

You don't hear it. The sha - - dow

73 **F** *pp* *<* *mf*

talks to me here. Far.

78 *pp* *<* *mf* **1**

Sha llow. Comes clo - ser. Hear? Why

86 **G**

don't you see. Be - twe \_\_\_\_\_ en the sha - dows

91

\_\_\_\_\_ Be \_\_\_\_\_ tween \_\_\_\_\_ the sha \_\_\_\_\_ dows.

95 **H** *p* *<* *mf*

\_\_\_\_\_ I \_\_\_\_\_ will \_\_\_\_\_ try to hear \_\_\_\_\_

102 **I**

it. You will not cry. I will \_\_\_\_\_

108

find a way \_\_\_\_\_ out. There's no - thing to hold me back

113 **J**

here. It's time to go to go to go to go to go So, don't.

121

Go on. Do - n't. To find your own wa - y. Be - lieve.

131

Don't. Go on. Don't stop.

140

Do - n't stop. It is no - t re - al. Do - n't. Go on. Do -

148

- n't To find your own wa - y. Be - lieve. Don't

157

Just lea - ve. No need to no need to stay. No need to no

165

need to be - tray. So, don't stop now. Just don't stop now.

175

So, don't stop now. Do - - - n't stop.

Soprano

## 2. I come to you

Moderato

*mf*

1

Way out. Is this a dream? Way

2

Way out. Is this a dream? Way

8

out. Hard to be - lie - ve.

rit.....

out. Hard to be - lie - ve.

15

**A** a tempo

Broad day - light. High walls a - round me. I on - ly fo - llow my sha -

Broad day - light. High walls a - round me. I on - ly fo - llow my sha -

19

- dow. Talk - ing to my - self walk - ing in ci - - r -

- dow. Talk - ing to my - self walk - ing in ci - - r -

22

**B**

- cles. Sta - ring at the mea - dow. Way out.

unis.

- cles. Sta - ring at the mea - dow. Way out.

unis.

28

Is this a dre - am? Way out.

C

34

rit.....a tempo

Hard to be - lie - ve. Look up. No need

40

to get lost in - side me. Be - tter to catch up and light up my

45

soul\_ to get out. Be - tter not to give up. Like a fro - zen sta -

50

-tue. Lost in ti - me and tu\_rned to blue.

56

E *mf*

Way out. Is this a dre - am? Way

63

rit.....a tempo

out. Hard to be - lie - ve. In broad light.

70

Walls a - round me. I \_\_\_\_\_ fo - llow my sha - dow.

74

Talk - ing to my - self walk - ing in end - less cir - cles. To

77

**G**

the mea - dow. on. Do what you have to do. Go

84

**H**

rit..... a tempo

on. I will say what's true. Go on. Do what

93

*pp* *mf* rit..

you have to do. Go on. I won't gi - ve

**I**

a tempo  
*mp*

101

up. A A A A A A

111

**1**

A A A A A

121

rit.....

A A A

132

*ppp* **J** a tempo  
*mf*

**1**

Way out. Is this a dre -

140

-am? Way out. Hard to be - lie - ve.

147

**K** a tempo

Broad day - light. High walls a - round me.

150

I on - ly fo - llow my sha - dow. Talk - ing to my - self walk - ing

154

**L**

in ci - r - cles. Star - ing at the mea - dow. Way out.

160

Is this a dre - am? Way out.

166

*é*

*rit.*.....

Hard to be - - lie - - ve.

Soprano

### 3. In your dreams

Adagio  
*pp*

A

Oh \_\_\_\_\_ Oh \_\_\_\_\_

9

Oh \_\_\_\_\_

18

*pp* **B** *p* *mp* *mf* rit. ....  
I see your face and dream a - way.

25

*ppp* a tempo *f* **C**  
Why me? Why me? Why me?

32

rit. .... *pp* a tempo **D**  
Why me? Dream on. Dream on.

40

*p*  
Your face. Em - brace. Your face and dream a -

48

*mp*  
- way. A A

55

*mf* *f*  
A A A A



**F**

a tempo

*pp*

62

Your face. A trace. I

70

see your face. Gone with - out a trace.

**G**

*mp*

78

Dre - am on. Dream on. I see yo - ur

85

fa - ce. A warm em - brace. I see yo - ur fa - ce and

rit. ....

**H**

a tempo *f*

90

dream a - way. Why me? Why

rit. ....

*ppp*

97

me? Why me? Why me?

Soprano

# 4. Where we live together

Moderato

12

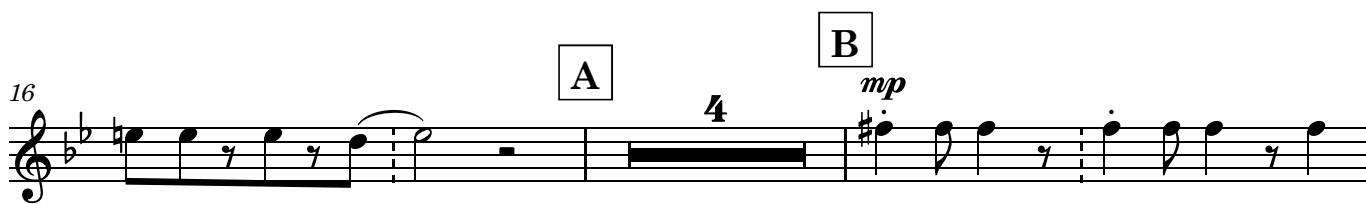
*mp*



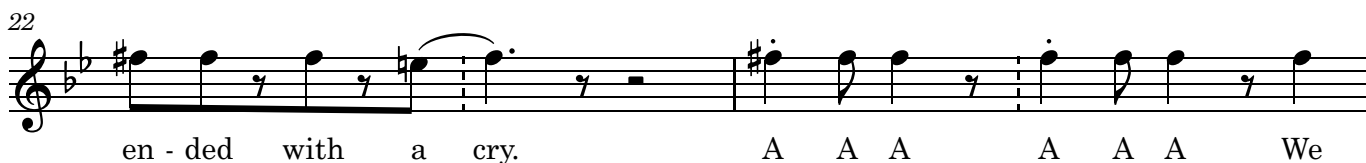
A A A A A A No -



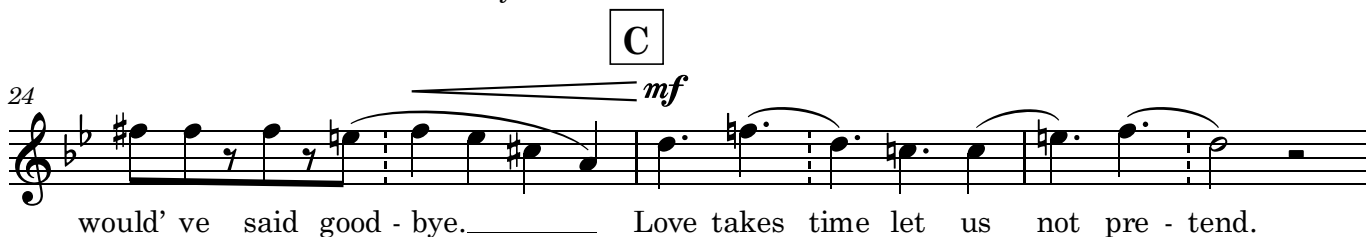
thing stood in our way. A A A A A A Our



love was here to stay. A A A A A A It



en - ded with a cry. A A A A A A We



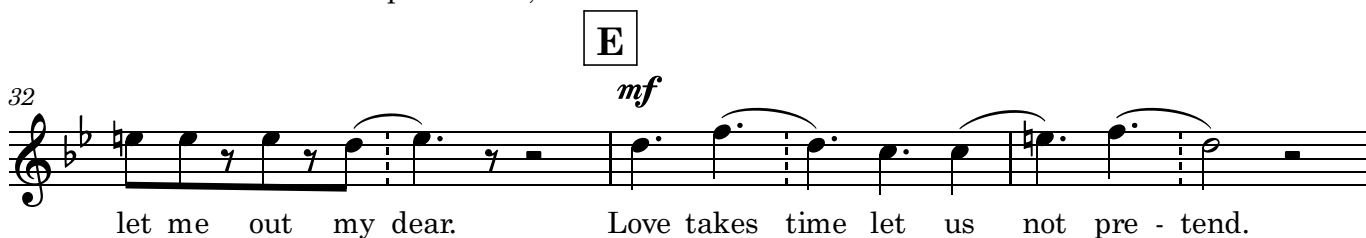
would' ve said good - bye. Love takes time let us not pre - tend.



Love should go on un - til the end. A A A A A A Please



let us not pre - tend, A A A A A A Please



let me out my dear. Love takes time let us not pre - tend.

F

*mp*

35

Love should go on un - til the end. A A A A A And

38

we went all the way. A A A A A A And

G

H

*mp*

40

it was here to stay. A A A A A A The

46

sky less blue and clear. A A A A A A The

I

*mf*

48

past years to a - ppear. Love takes time let us not pre - tend.

51

Love should go on un - til the end. Lo ve takes time let us

rit.....

54

not pre - tend. Love should go on un - til the end.

Soprano

# 5. Hiding between the shadows

Moderato 1

*mp* *mf* *mf*

A... Fol - low me.

6 *mp* *mf* *mp* *mf*

A... And you will see. A... Shades of blue.

10 *mp* *mf* *mp* **A** *mf*

A... So clear and true. A... Hold my hand...

14 *mp* *mf* *mp* *mf*

A... Take a stand. A... Fo - llow the tide...

18 *mp* *mf* *mp*

A... No need to hi - - de. A...

**B**

21 *mf* *mp* *mf* *mp*

Come to me... A... Lis - ten and see... A...

25 *mf* *mp* *mf*

A world so bright. A... It turns dark to light.

28 *mp* **C** *mf* *mp* *mf*

A... Fo - llow the tide... A... No need to hi -

32 *mp* *mf* *mp*  
-de. A Be - tween the sha - dows. A

35 *mf* *mp*  
Be - tween the sha - dows. A A A

38  
A A A A A A

42 **D** rit. *p*  
A A A A A