

Clash Cymbal & Tam-tam

# Nebula

Mark Van Overmeire

## 1. Awakening

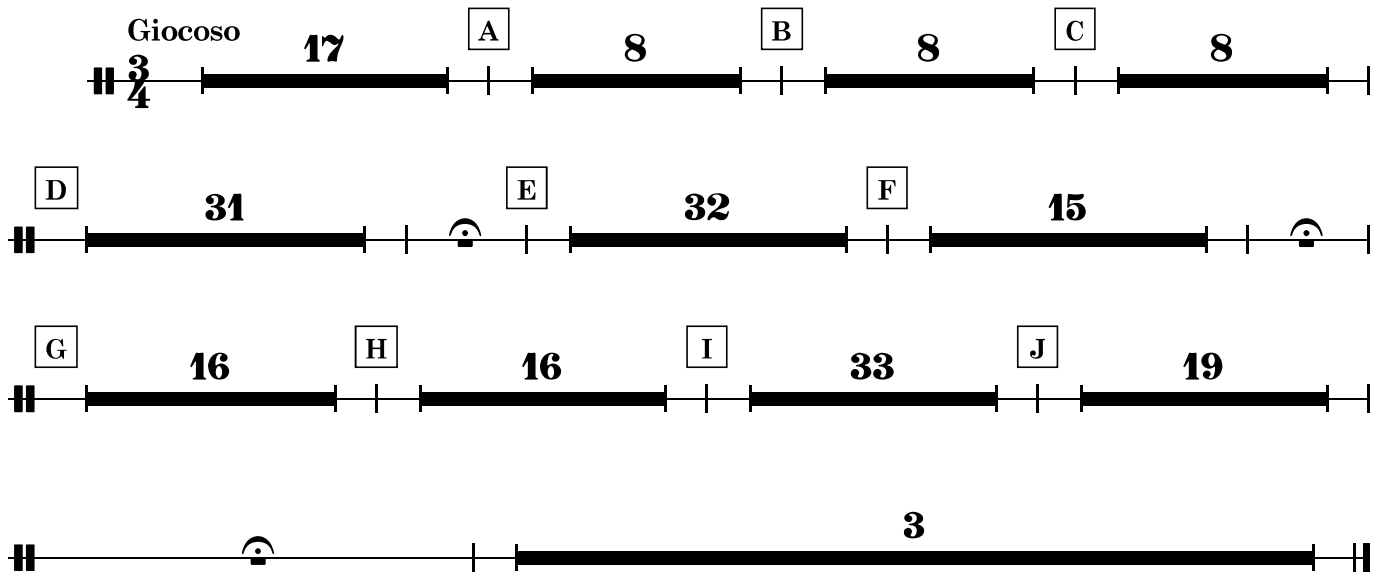
Moderato

Clash Cymbal & Tam-tam



Clash Cymbal & Tam-tam

2. Reflection



Clash Cymbal & Tam-tam

### 3. Expanse

Andante moderato

Musical staff with time signature changes and section markers. The staff starts with a treble clef and a 2/4 time signature. It contains several measures of music, with section markers A, B, C, D, and E. The time signature changes to 4/4, then 2/4, then 4/4, and finally 4/4. The measures are grouped into sections of 24, 4, 4, 12, 2, 6, 16, and 32 measures.

Snare Drum notation. The staff shows a series of eighth notes. Measures 104 and 108 are indicated. The time signature is 4/4.

Musical staff with dynamics *f* and *mf*. The staff shows a series of eighth notes. Measures 112 are indicated. The time signature changes from 4/4 to 2/4. There are also some rests and accidentals.

Musical staff with dynamics *f* and *mf*. The staff shows a series of eighth notes. Measures 116 and 132 are indicated. Section marker F is present. The time signature is 4/4. There are also some rests and accidentals.

Musical staff with section markers H, I, and J. The staff shows a series of eighth notes. Measures 12 and 16 are indicated. The time signature is 4/4.

Snare Drum notation. The staff shows a series of eighth notes. Section marker K is present. Measures 240 and 244 are indicated. The time signature is 4/4.

Musical staff with dynamics *f*. The staff shows a series of eighth notes. Measures 248, 252, and 256 are indicated. The time signature is 4/4. There are also some rests and accidentals.

Clash Cymbal & Tam-tam

Musical score for Clash Cymbal & Tam-tam, measures 260-332. The score is written on a single staff with a double bar line at the beginning and end. The notation includes various rhythmic patterns, rests, and dynamic markings. Measure numbers are indicated above the staff: 260, 264, 268, 272, 276, 280, 284, 288, 292, 300, 320, 324, 328, and 332. Dynamic markings include *f* (forte) and *mf* (mezzo-forte). Performance instructions include "Cl. Cym.", "To Tam.", "To Cl. Cym.", and "Cl. Cym.". A large black bar indicates a 12-measure rest starting at measure 300. A box labeled "L" is placed above the staff at measure 300, and a box labeled "M" is placed above the staff at measure 304. A box labeled "3" is placed above the staff at measure 332. The score ends with a double bar line at measure 332.